

# Presentation of the Framework and Official Launch

**Professor David Currow**

Version 1.0 | 03 March 2021

# NSW Primary Health Care Cancer Framework



Cancer Institute NSW has developed the *NSW Primary Health Care Cancer Framework* to enhance engagement with the primary health care sector and cross-sector integration.

The Framework recognises the important role of the primary health care sector and the significant contribution of primary health care providers in cancer control and achieving better outcomes for people with cancer.

# Rationale

- 75 – 85% of cancers diagnosed following GP presentation<sub>1</sub>
- 30 to 50% of cancers preventable<sub>2</sub>
- Role of primary health care in cancer control is not well understood
- Primary health care is a **pivotal part of health care provision and the interface between health care systems**



1. Emery, JM. The challenges of early diagnosis of cancer in general practice. Med J Aust 2015 Nov;203 (10): 391-393  
2. World Health Organisation. Cancer. Available at: <https://www.who.int/news-room/fact-sheets/detail/cancer> (accessed 17 February 2021)

# Development

**Evidence** - Literature review

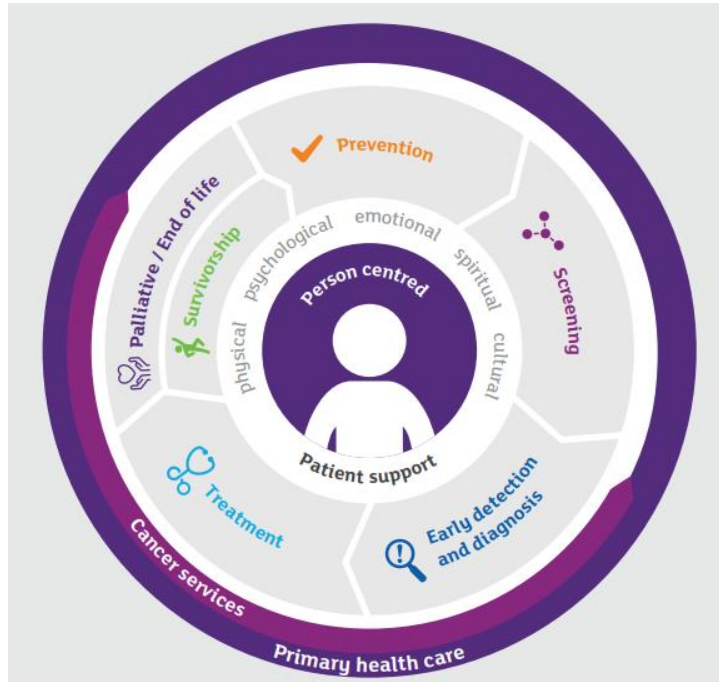
## **Consultation process**

- Focus groups, workshops and meetings
- Key Stakeholders – Innovations Conference, Primary Health Networks, Peak bodies, Cancer System Innovation Managers
- Primary Care Advisory Group
- Working Group – Representatives from divisions in CINSW

## **Governance**

- Steering Committee – internal (Divisional Directors)
- Advisory Group – clinicians, peak bodies, cancer services
- Working Group

# Underlying Principles



- **Person centred and integrated care** is essential to optimal cancer control outcomes.
- The primary health care sector is key to **delivering person centred care**.
- **Engagement and partnerships** across the health system strengthen and support the role of the primary health care sector in cancer control.

# Focus Areas

**Information and communication** - ensure the best decisions are made with patients about their care.

**Equitable and accessible services** - promote person centred and culturally appropriate care that facilitates access to services and programs by priority populations.

**Engagement and partnerships** - developing and strengthening partnerships across the health system

**Data, evaluation and research** - optimising the use of data & evidence and increase primary care involvement in research

# Priority Populations

- Aboriginal communities
- Culturally and linguistically diverse communities
- Rural and remote communities
- Socially and/or economically disadvantaged communities
- Gender and sexuality diverse people



# Commendation of Framework



Working  
together  
to lessen the  
impact of  
cancer