



# cancer institute NSW

## Cancer Trials Nurses and Data Managers Workshop

Angelina Catanzariti  
Clinical Trials Manager

# NSW Cancer Trials Network - What?

- Overview of Network Elements
- Partnership with Cancer Council NSW
- Cancer Trials Nurses and Data Manager Grants

# Overview of Key Elements

- Network Executive Committee
- Area Health Service Networks
  - Management Committee
  - Clinical Cancer Research Support Grant
  - Cancer Trials Nurses and Data Managers
  - Development of AHS Network Portfolios
- Clinical Trials Partnerships
- Research Infrastructure Grants

# NSW Cancer Trials Network

## Cancer Institute NSW Supporting Programs

Cancer Institute NSW:  
Grants Review Committee  
**Chair: Prof John Funder**

Clinical Trials Grants Review  
Sub-Committee  
**Chair: Prof Michael Millward**

Cancer Institute NSW:  
Clinical Research Ethics Committee  
**Chair: Prof Ian Olver**

Cancer Institute NSW:  
Medical and Scientific Review  
Panel

Industry Working Group

Cancer Research Strategies Round  
Table and Working Party

Cancer Research IT Support  
Program

NSW Oncology Groups  
(NSWOG)

**NSW Cancer Trials Network**  
EXECUTIVE COMMITTEE

**Chair: Prof Robyn Ward**

Site Review  
Sub-Committee

Protocol Review  
Sub-Committee

**Local Area  
Networks**

## Cancer Institute NSW Clinical Research Grants

AHS Clinical Cancer Research  
Support Grants

Clinical Trials Nurses and Data  
Managers Support Grants

Clinical Trials Partnership  
Grants

Quality Assurance  
**Kendle Australia**

Clinical Trial Operation and  
Statistical Support  
**NHMRC CTC**

Partnership Operational  
Executive Committee  
(POEC)

National Clinical Trials  
Groups - Infrastructure  
Grants

Cancer Research  
Infrastructure Grants



# Partnership with Cancer Council NSW

- 40 x 0.5FTE positions established under Cancer Trials NSW
- Funding continues to be provided by TCCN, but administration transferred to CINSW
- Decisions regarding processes for continued support of all positions agreed by both organisations
- TCCN programs supported by CINSW, all funded positions encouraged to participate in TCCN fundraising activities

# Cancer Trials Nurses and Data Managers

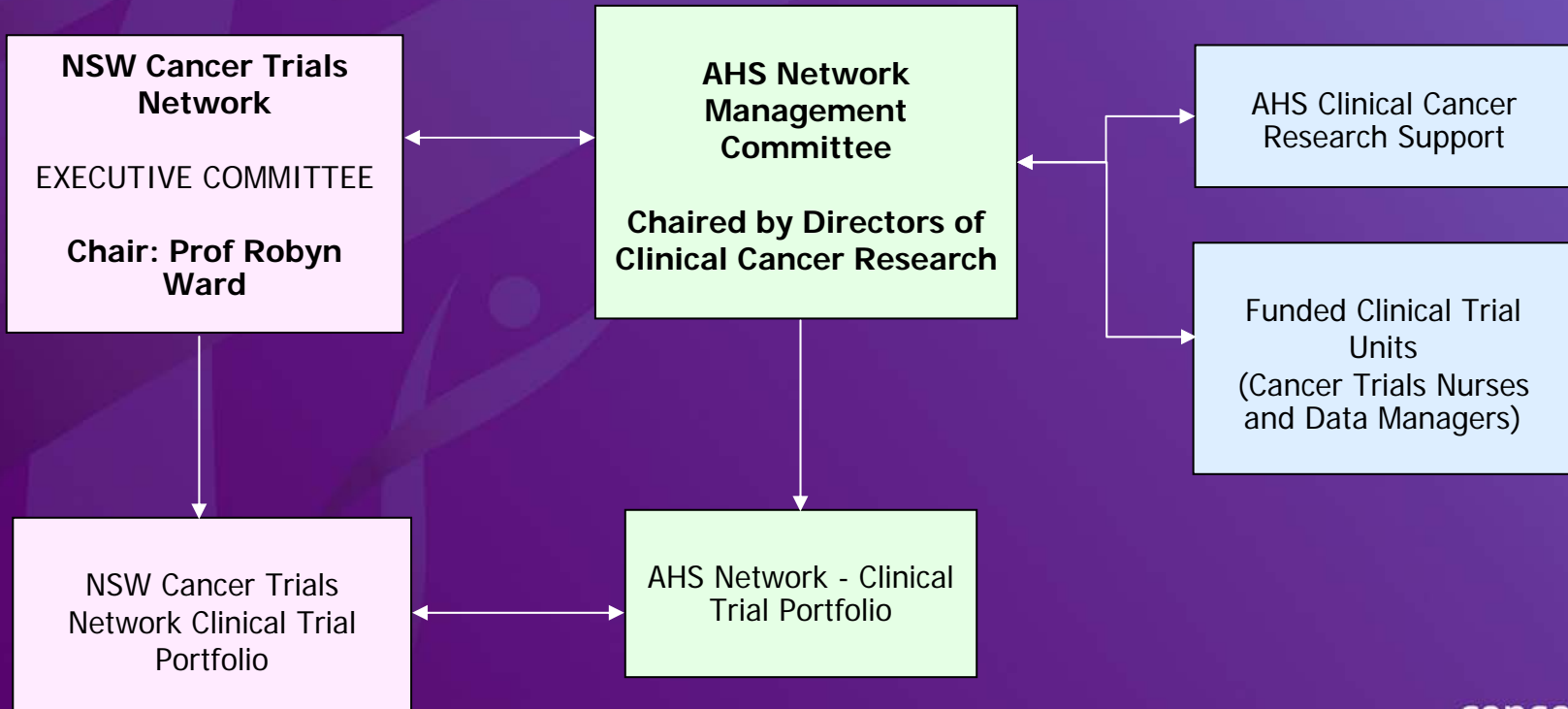
- Consolidation of funding programs
- Standard processes for
  - support of positions
  - reporting
  - review of progress
- Currently 49 FTE positions funded

# AHS Networks

- Overview of AHS Networks
- Clinical Cancer Research Support Grant
  - Director of Clinical Cancer Research (0.1 FTE)
  - Clinical Cancer Regulatory Affairs Officer (1 FTE)
- AHS Portfolios
- Development of Network Portfolio of trials

# NSW Cancer Trials Network

Area Health Service Networks



# AHS Portfolio of Trials

- Portfolio of trials supported by the Network being developed by each AHS
- AHS Portfolios determined by AHS Management Committees
- Encompass all trial types and designs, and all sponsor types
- Details of trials in Portfolios will be provided to each unit within the AHS Network

# Network Portfolio

- Consolidation of individual AHS Portfolios
- Aim is to provide a balance of trials for the Network
  - Industry and non-industry trials
  - All phases of trials
- Portfolio will be published for information of all units
- Access for patients / consumers currently being developed